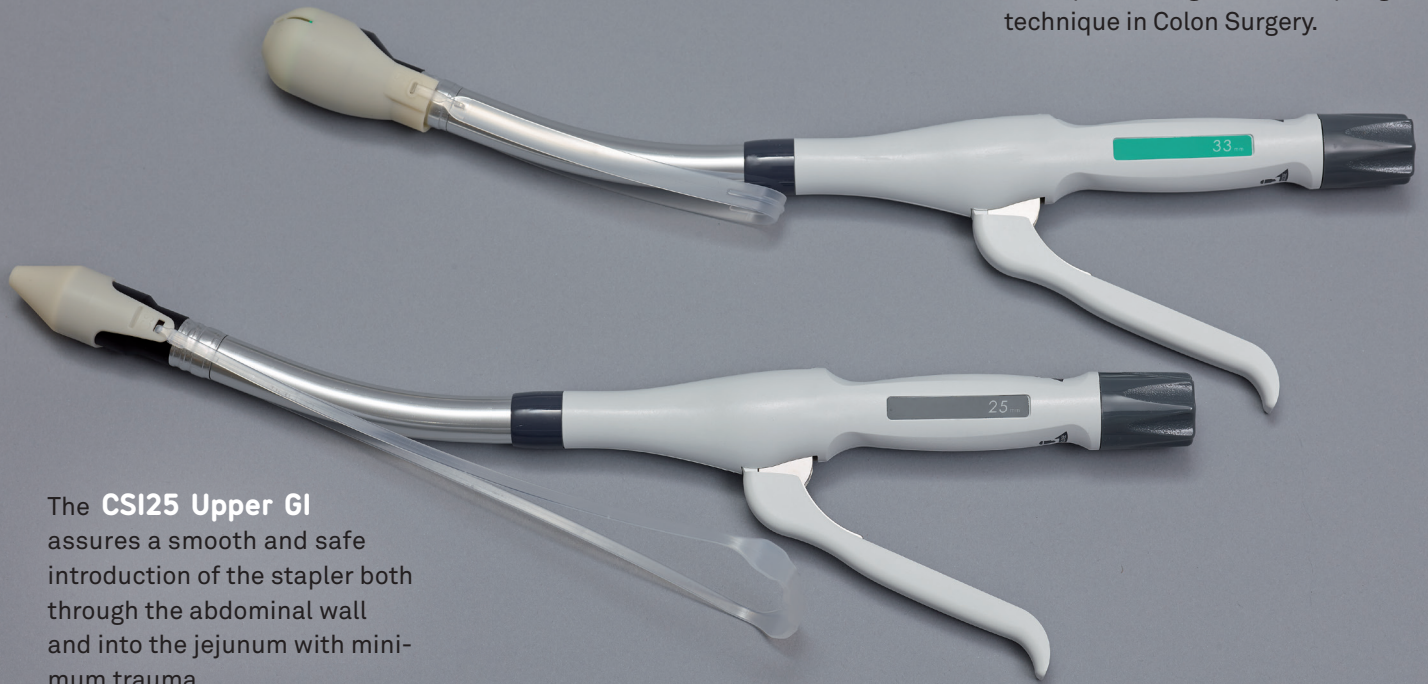


# CSI

## Circular Stapler Introducer

The **CSI31 Colon** protects the anal sphincter and facilitates the use of Circular Stapler when performing double-stapling technique in Colon Surgery.



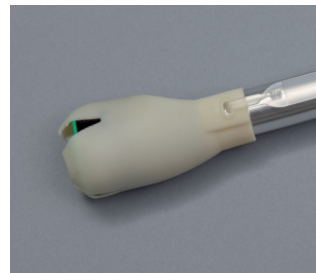
The **CSI25 Upper GI** assures a smooth and safe introduction of the stapler both through the abdominal wall and into the jejunum with minimum trauma.



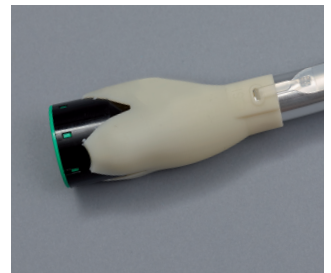
After the introduction into jejunum, the CSI25 can be pulled back over the stapler head on the attached plastic thread.



The released CSI25 is placed on the stapler shaft without interfering with the application of the circular stapler.



After the introduction through the anal sphincter, the CSI31 can be released by pulling the attached plastic band.



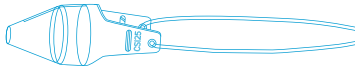
The breaking points open so that the stapler head is free again and the anastomosis can be performed as usual.



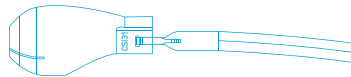
**SURGTECH AG**

WE CARE EVERY DAY

## CSI25 Upper GI



## CSI31 Colon



The CSI facilitates the insertion of the circular stapler not only through the abdominal wall but also into the abdomen and then into the jejunum (CSI25 Upper GI) or Colon (CSI31 Colon) enhancing safety and swiftness of laparoscopic Roux-en-Y Gastric Bypass or circular anastomosis in Colon Surgery.

### PRODUCT SPECIFICATIONS

PRODUCT CODE	SALES UNIT	PCS PER UNIT	TO USE WITH
<b>CSI25</b>	1 OP	10 pcs	Circular Stapler with Ø 21 or 25 mm
<b>CSI31</b>	1 OP	10 pcs	Circular Stapler with Ø 28, 29, 31 or 33 mm

### ORDER INFORMATION

**SurgTech AG**, Zugerstrasse 74, 6341 Baar, Switzerland

Email: [order@surgtech.ch](mailto:order@surgtech.ch)

Phone: +41 (0)41 767 08 83 / Fax: +41 (0)41 767 08 84



**SURGTECH AG**

**SurgTech AG**  
Zugerstrasse 74  
CH-6341 Baar

P +41 (0)41 767 08 83

F +41 (0)41 767 08 84

[info@surgtech.ch](mailto:info@surgtech.ch)

[www.surgtech.ch](http://www.surgtech.ch)